

## Custom Pigment Recipe Colors

Updated: 6/21/16



### Mixing Earth Pigments

You will need good storage cups or jars. Small spice jars with a screw on lid is ideal. You will also need a small scoop to help measure out the pigment equally. The “3 Piece Bead Scoop Set” pictured is highly recommended. I found my scoop set at Jo-Ann Fabrics. Use something with a flat edge to level off the scoop. Do not pack the pigment tightly in the scoop. Mixing: Mix in a glass bowl and wipe clean when mixing a new color. If white or black pigment is used, be sure to mix very well. The earth pigment company website is: <http://www.earthpigments.com>

### Earth Pigment Color Changes

This earth pigment custom color list began in 2015. This list will be updated as changes are needed. Since then some earth pigment color names have been changed and some pigments have been discontinued. Below are updated notes on these changes. Any custom color that is has red letters is a discontinued custom color.

Orange Iron Oxide used to be called Orange 960

Black Iron Oxide used to be called Black 318

5/16 Slate Grey is discontinued

3/16 Environox Falun Red is discontinued

## Custom Pigment Recipe Colors

Pigment #	Earth Pigment Color	Scoops	Earth Pigment Color	Scoops	Earth Pigment Color	Scoops	Earth Pigment Color	Scoops
1	Light Yellow Ochre	3	Italian Umber	2				
2	Italian Umber	2	Burnt Umber	1	Amber Ocher Dunkel	1		
3	Brown Ocher	1	Light Yellow Ocher	1				
4	Colonial Burnt Sienna	7	Light Sienna	1	Natural Sienna	2	Cyprus Umber Dark	2
5	Dark Neutral Brown	5	Colonial Red	1				
6	Brown Ocher	1	Light Yellow Ocher	2	Amber Ocher Dunkel	1		
7	Custom mix 6	1	Titanium White	2	Light Yellow Ocher	1		
8	Brown Ocher	2	Titanium White	3	Orange Iron Oxide	4		
9	Brown Ocher	1	Burnt Sienna	1				
10	Environox Dark Brown	1	Cyprus Umber Dark	1				
11	Italian Umber	1	Amber Ocher Dunkel	1				
12	Cyprus Umber Warm	1	Black Iron Oxide	1				
13	Cyprus Umber Warm	1	Dark Yellow Ochre	2	Light Yellow Ochre	2		
14b	Dark Neutral Brown	5	Colonial Red	1	Black Iron Oxide	5		
15b	Brown Ocher	4	Light Yellow Ocher	5	Italian Umber	1	Havana Ocher	1
16	Light Yellow Ochre	5	Brown Ocher	1	Titanium White	4	Slate	2
17	Light Sienna	2	Light Yellow Ochre	4				
18b	Pewter Grey	12	Roman Black	1				
19	Italian Umber	2	Brown Ocher	1	Titanium White	5	Havana Ochre	2
20	Amber Ocher Dunkel	3	Light Yellow Ochre	3	Italian Umber	1		
21	Brown Ocher	2	Italian Umber	3				
22	Brown Ocher	2	Italian Umber	3	Havana Ocher	2		
23	Cyprus Umber Warm	3	Havana Ocher	2	Orange Iron Oxide	2		
24b	Dark Neutral Brown	1	Cyprus Umber Warm	2				
25b	Havana Ocher	3	Brown Ocher	3	Orange Iron Oxide	2	Dark Yellow Ocher	2
26b	Dark Neutral Brown	3	Colonial Red	2	Orange Iron Oxide	1		
27b	Pewter Grey	7	Italian Umber	1	Light Yellow Ochre	6	Brown Ocher	2
28	Natural Yellow	1	Italian Umber	1				
29	Italian Umber	1	Cyprus Umber Dark	1				
30b	Colonial Red	5	Dark Neutral Brown	2	Environox Terra Cotta	3	Ercolano Red	5
30b Cont...	Orange Iron Oxide	3						

## Custom Pigment Recipe Colors

Pigment #	Earth Pigment Color	Scoops	Earth Pigment Color	Scoops	Earth Pigment Color	Scoops	Earth Pigment Color	Scoops
31b	Light Yellow Ochre	3	Italian Umber	2	Pewter Grey	10		
32b	Colonial Raw Sienna	5	Pewter Grey	1	Brown Ocher	1		
33b								
34	Vine Black	3	Italian Umber	1	Titanium White	2		
35	Italian Umber	1	Natural Sienna	1				
36	Environox Terra Cotta	3	Italian Umber	2				
37b	Burnt Siena	4	Ercolano Red	1	Orange Iron Oxide	1		
38c								
39b								
40	Environox Terra Cotta	1	Havana Ocher	1				
41	Burnt Umber	2	Burnt Sienna	1	Brown Ocher	1		
42c								
43b								
44b								
45b								
46b	Pewter Grey	7	Italian Umber	2	Havana Ocher	2	Light Yellow Ochre	3
47	Natural Sienna	4	Environox Terra Cotta	2				
48	Natural Sienna	4	Environox Terra Cotta	1				
49b	Rose Earth	1	Brown Ocher	1	Titanium White	1		
50b								
51	Brown Ocher	1	Burnt Sienna	1				
52	Brown Ocher	4	Burnt Sienna	7				
53	Burnt Umber	1	Black Iron Oxide	1				
54								
55	Brown Ocher	5	Rose Earth	1				
56	Cyprus Umber Dark	5	Black Iron Oxide	1				
57	Cyprus Umber Dark	1	Black Iron Oxide	1				
58b								
59b	Pewter Grey	3	Brown Ocher	2	Amber Ocher Dunkel	3	Light Yellow Ochre	4
59b Cont....	Italian Umber	1						
60	Light Yellow Ochre	8	Italian Umber	1				

## Custom Pigment Recipe Colors

Pigment #	Earth Pigment Color	Scoops	Earth Pigment Color	Scoops	Earth Pigment Color	Scoops	Earth Pigment Color	Scoops
61	Environox Terra Cotta	5	Brown Ocher	1	<b>Brown Iron Oxide</b>	1		
62	<b>Brown Iron Oxide</b>	1	Cyprus Umber Dark	1				
63	Light Yellow Ocher	7	Rose Earth	2	Burnt Sienna	1	Colonial Burnt Sienna	4
65b								
66b								
67 Blue Eyes Base color	Titanium White	10	Primary Blue	7	<b>Mix this pigment with a paint brush</b>			

# Custom Pigment Recipe Colors with PearlEx Pigment

The PearlEx pigment color is in bold blue text

Pigment #	Earth Pigment Color	Scoops	Earth Pigment Color	Scoops	Earth Pigment Color	Scoops	Earth Pigment Color	Scoops
PX1	<b>Pearl White</b>	2	Light Yellow Ocher	4	Pewter Grey	1	Micropearl	1
PX2	<b>Micropearl</b>	2	Pigment 46b	6				
PX3								
PX4								
PX5								

# DISCONTINUED

## Custom Pigment Recipe Colors

The pigment that is discontinued from the Earth Pigments company is in bold

Pigment #	Earth Pigment Color	Scoops	Earth Pigment Color	Scoops	Earth Pigment Color	Scoops	Earth Pigment Color	Scoops
14	Environox Dark Brown	2	<b>Environox Falun Red</b>	1				
15	Cyprus Umber Dark	2	<b>Environ Falun Red</b>	1				
18	<b>Slate Grey</b>	4	Light Yellow Ochre	1				
24	Cyprus Umber Warm	3	<b>Environox Falun Red</b>	2	Black Iron Oxide	2		
25	Black Iron Oxide	4	<b>Environox Falun Red</b>	4				
26	Italian Umber	4	<b>Slate Grey</b>	14	Venetian Red	1	Light Yellow Ochre	5
27	<b>Slate Grey</b>	7	Vine Black	1	** Not a strong color			
30	Black Iron Oxide	3	<b>Environox Falun Red</b>	5				
31	<b>Slate</b>	6	Italian Umber	1				
32	<b>Slate</b>	5	Italian Umber	4	Roman Black	1		
33	<b>Slate</b>	4	Italian Umber	2				
37	Black Iron Oxide	3	<b>Environox Falun Red</b>	2				
38	Black Iron Oxide	3	<b>Environox Falun Red</b>	1				
38b	<b>Slate</b>	12	Italian Umber	1	Vine Black	1	** Not a strong color	
39	<b>Slate</b>	8	Italian Umber	1	Light Yellow Ochre	2		
42	<b>Environox Falun Red</b>	5	Cyprus Umber Warm	1				
42b	<b>Slate</b>	5	Vine Black	2	Italian Umber	1		
43	Environox Dark Brown	1	<b>Environox Falun Red</b>	1				
44	<b>Slate</b>	10	Rose Earth	1	<b>Environox Falun Red</b>	1	Brown Iron Oxide	2
45	<b>Slate</b>	10	<b>Environox Falun Red</b>	1	Cyprus Umber Warm	1	Burnt Umber	1
46	<b>Slate</b>	8	Italian Umber	1	Havana Ocher	2		
49	Cyprus Umber Warm	3	<b>Environox Falun Red</b>	2	Black Iron Oxide	4		
50 Skin Pink	Colonial Red	2	<b>Slate</b>	4	Titanium White	8		



# DISCONTINUED

## Custom Pigment Recipe Colors

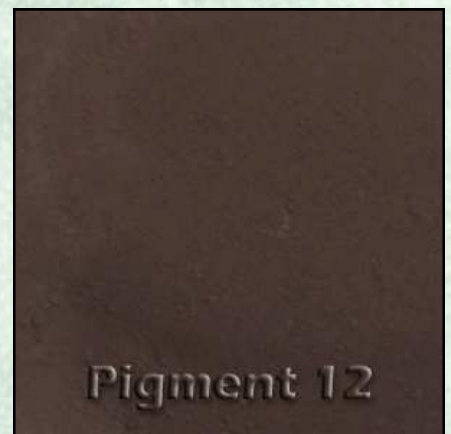
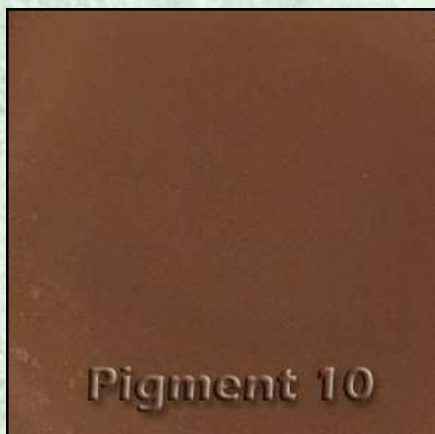
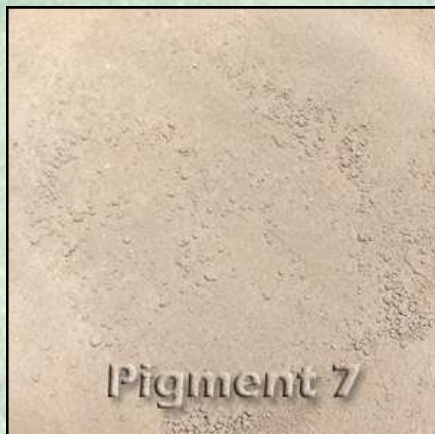
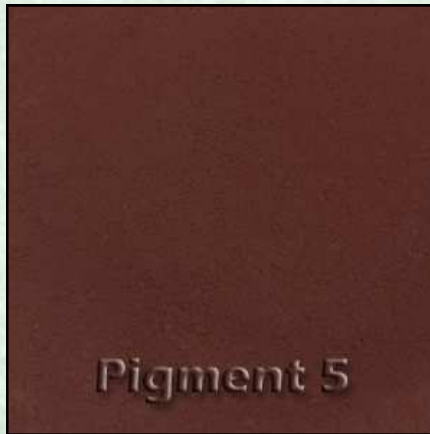
The pigment that is discontinued from the Earth Pigments company is in bold

Pigment #	Earth Pigment Color	Scoops	Earth Pigment Color	Scoops	Earth Pigment Color	Scoops	Earth Pigment Color	Scoops
58	<b>Slate</b>	3	Light Yellow Ochre	4	Italian Umber	1		
59	<b>Custom 58</b>	4	Brown Ocher	1	Amber Ocher Dunkel	1		
65	<b>Environox Fauln Red</b>	3	<b>Brown Iron Oxide</b>	2				
66	Environox Dark Brown	2	<b>Environox Falun Red</b>	2	Custom Pigment 24	2		
64	Vine Black	2	<b>Custom Pigment 32</b>	1				



## Custom Pigment Recipe Colors

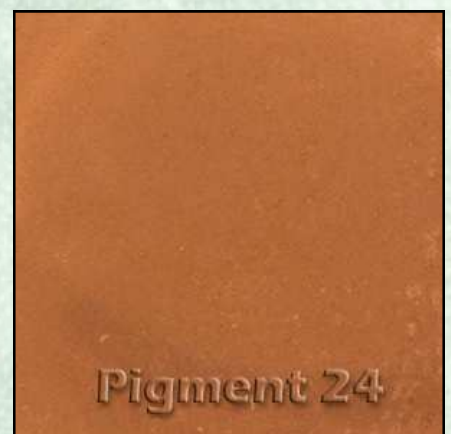
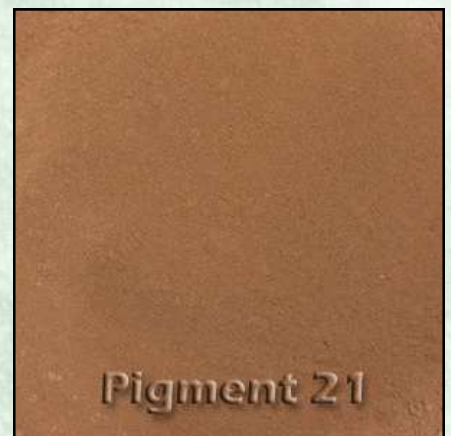
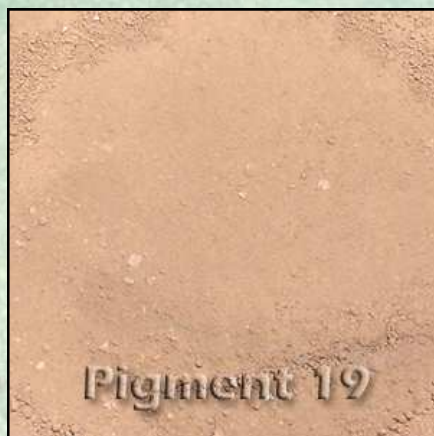
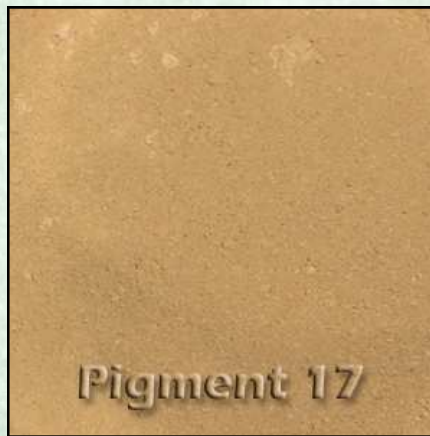
These images are not 100% accurate but very close to the actual pigment color.





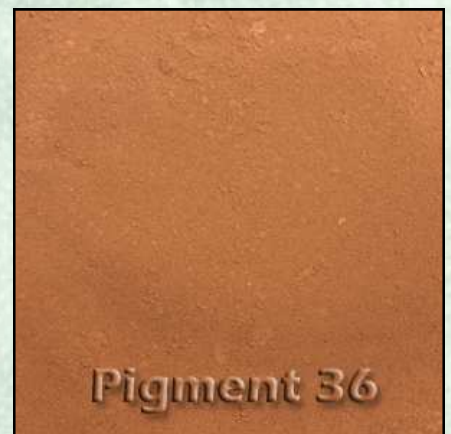
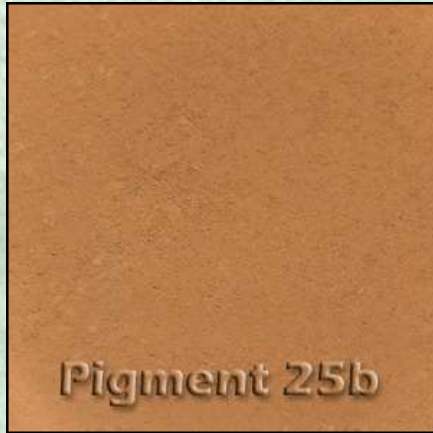
## Custom Pigment Recipe Colors

These images are not 100% accurate but very close to the actual pigment color.



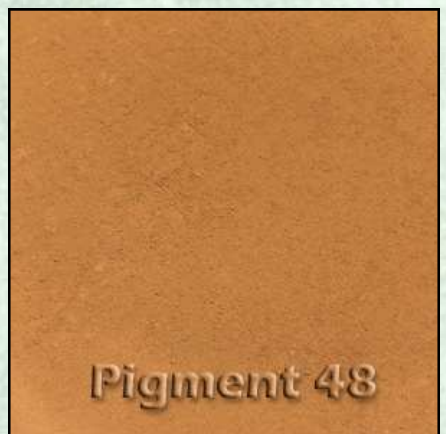
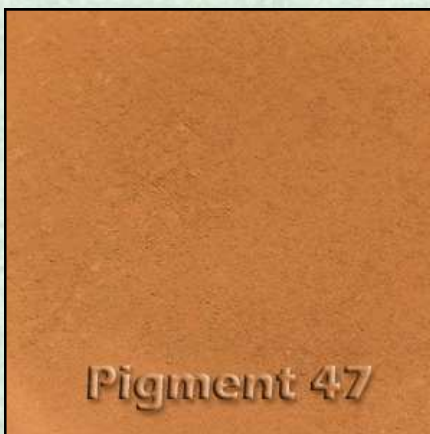
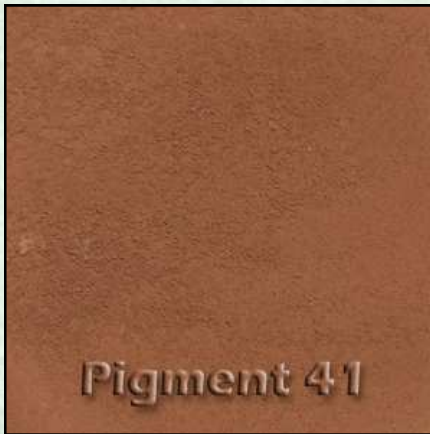
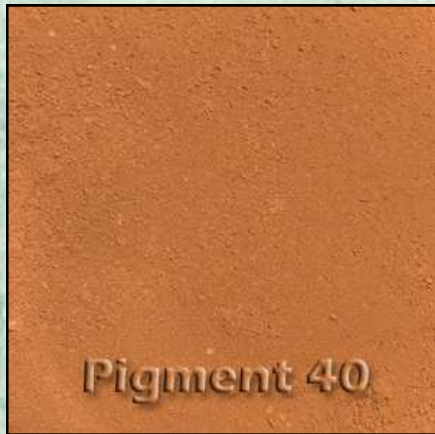
## Custom Pigment Recipe Colors

These images are not 100% accurate but very close to the actual pigment color.



## Custom Pigment Recipe Colors

These images are not 100% accurate but very close to the actual pigment color.



## Custom Pigment Recipe Colors

These images are not 100% accurate but very close to the actual pigment color.



## Custom Pigment Recipe Colors

These images are not 100% accurate but very close to the actual pigment color.

